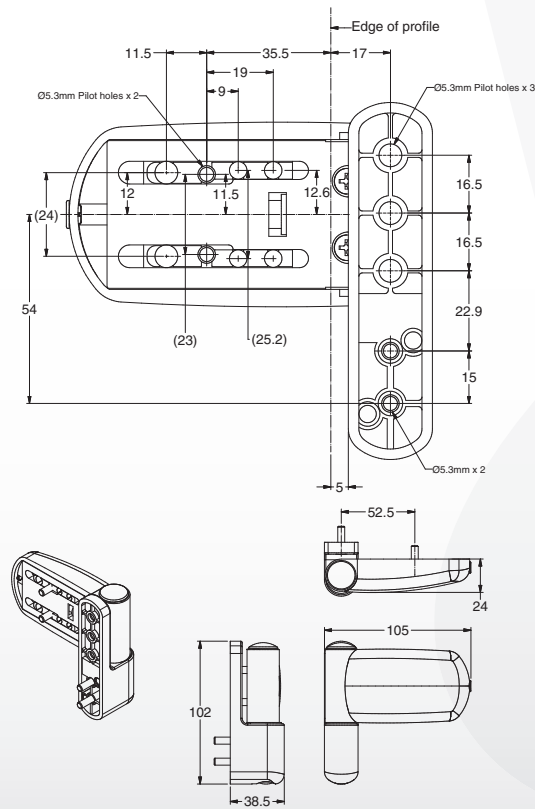


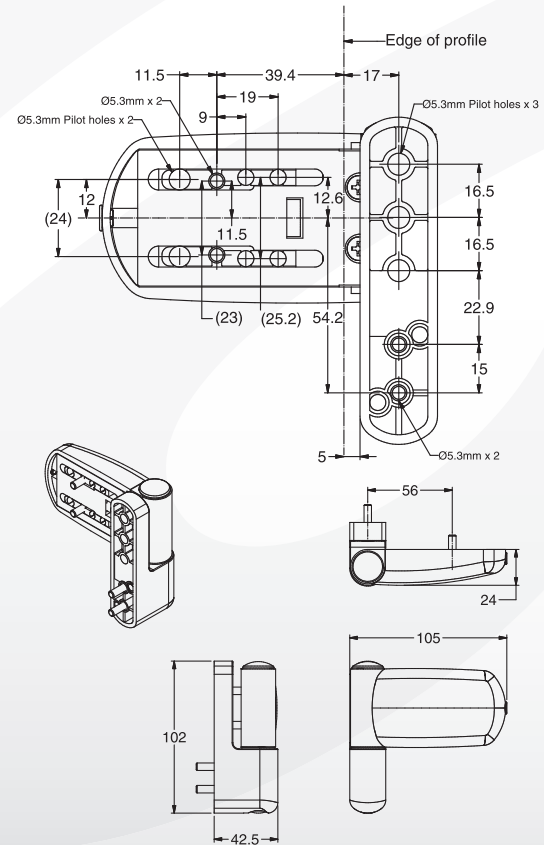
Technical Information

HEAVY DUTY TRIAD 3D HINGE - DIMENSIONS

SP - Heavy Duty Triad 3D Hinge - 12-16mm Upstand



HP - Heavy Duty Triad 3D Hinge - 16-24mm Upstand



PRODUCT CODES

| PREFIX (ADD ONE TO CODE) |              | HINGE | FINISH |
|--------------------------|--------------|-------|--------|
| REBATE 12-16             | REBATE 16-20 |       |        |
| SP                       | HP           | 3D    | WH     |
| SP                       | HP           | 3D    | BL     |
| SP                       | HP           | 3D    | BR     |
| SP                       | HP           | 3D    | C      |
| SP                       | HP           | 3D    | CG     |
| SP                       | HP           | 3D    | CH     |
| SP                       | HP           | 3D    | FL     |

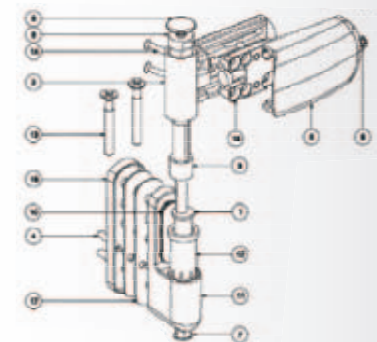
i.e: SP3DWH = White, Premium 3D Hinge - Rebate 12-16  
HP3DWH = White, Premium 3D Hinge - Rebate 16-20

Key to product codes

|                |                     |
|----------------|---------------------|
| <b>Finish:</b> | C - Caramel         |
| WH - White     | CH - Chrome         |
| BL - Black     | CG - Champagne Gold |
| BR - Brown     | FL - Flint          |

Parts List

- 1). Eccentric Pin
- 2). Hinge Leaf
- 3). Top Bush
- 4). Pin 6
- 5). Hinge Cover
- 6). Adjustment Screws
- 7). Bottom Cover Cap (XX3DHINGE029)**
- 8). Top Cover Cap (XX3DHINGE030)**
- 10). Leaf Cover Cap (XX3DHINGE031)**
- 11). Hinge Body
- 12). Bottom Bush
- 12). Screw 10 - M4 x 18 Philips Screw CSK
- 13). Screw 9
- 14). Screw - M4 x 18 Phillips Screw CSK
- 15). Shoe Cover (XX3DHINGE034)**
- 16). 1mm Shim (XX3DHINGE035)**



The parts marked in bold can be ordered as spare/replacement items

XX to be replaced with coating Prefix as listed opposite, i.e. WH3DHINGE035 = White 1mm Shim for SP/HP 3D Hinge

Contact your Avocet Sales Advisor for more information

- Heavy duty, 3 way adjustable high security door hinge offering the ultimate in versatility and functionality
- Meets the requirements of **BS PAS024** when installed as recommended by Avocet
- To suit rebate heights of 12-16mm (SP) & 16-20mm (HP) up to 24mm with packers
- Additional security is provided when fitted with one way security screws (5 provided in pack) and hinge bolt
- Available in White, Black, Brown, Caramel, Champagne Gold, Chrome & Flint

## Technical Information

### Assessment Data

**Performance:** Endurance tested to 100,000 operations,

Load tested to 100kg on 3 hinges

**Corrosion resistance:** All finishes meet the requirements of BS EN 1670 - grade 5 (500 hrs Salt Spray)

### Material Specifications

**Hinge leaf, Carriage plate & Body:** Zinc Alloy BS1004A

**Top/Bottom Bush:** Nylon 6

**Pins:** Stainless Steel

**Powder Coating:** White, Black, Brown & Caramel, 60 microns minimum coating thickness

**PVD/Chrome Coating:** Champagne Gold/Chrome/Flint, multiple layer plating process

### Additional Information

**Multipacks:** Packs of 24 available to order (Add MP to end of code)

**Box Quantity:** Outer Box: 20, 3 Per Box

