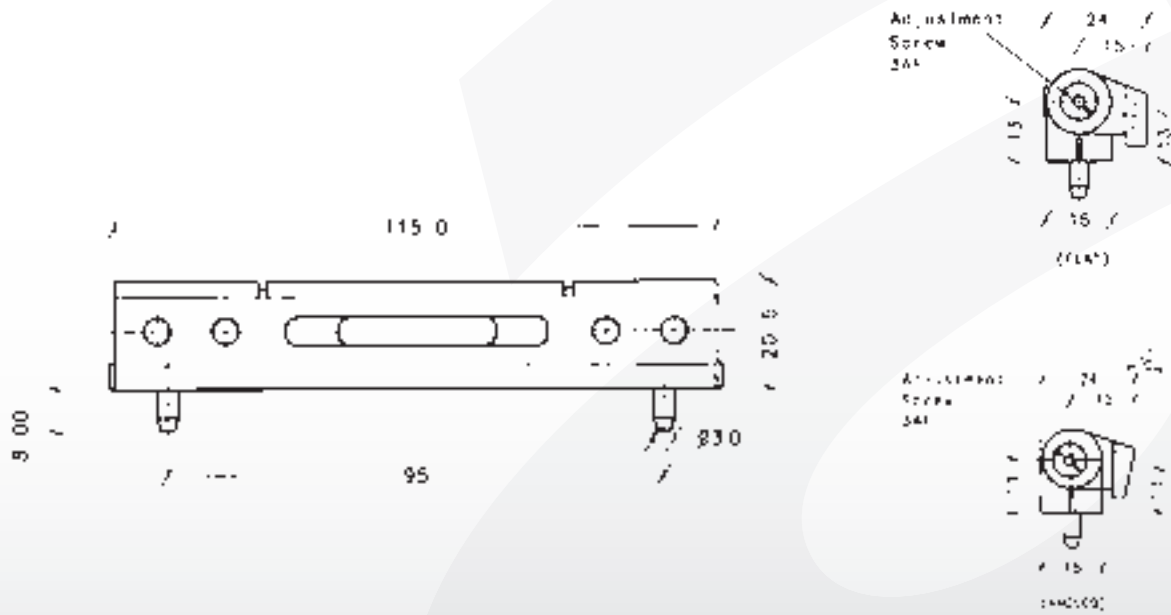
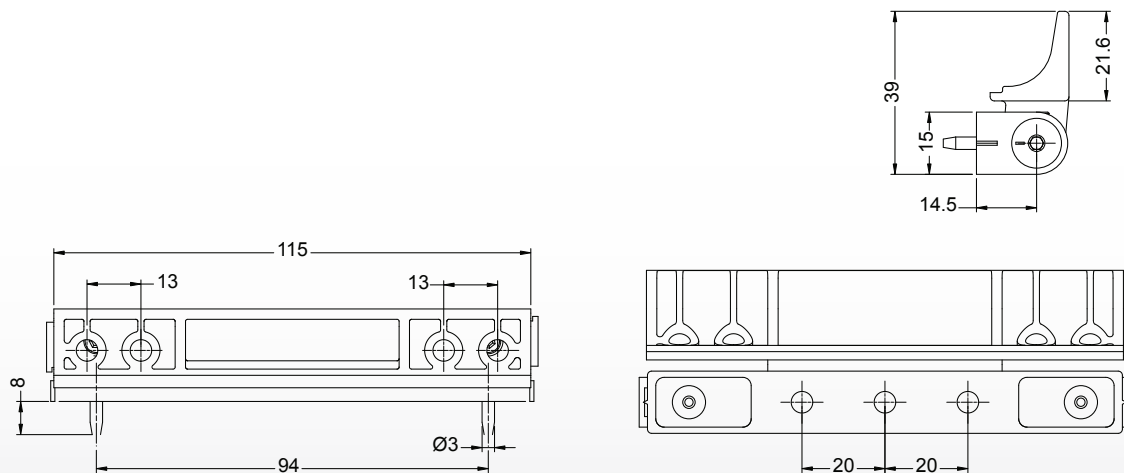


Technical Information

115MM ADJUSTABLE HINGES - DIMENSIONS



115MM ADJUSTABLE HINGES / SYNSEAL TYPE - DIMENSIONS



BUTT HINGES

- Available in flat and angled formats
- Up to 1.5mm of adjustment to cater for all weatherseal types
- Tested to 20,000 operations and load tested to 100 kilos in on-site test laboratory
- 115mm Hinge - International Patent No.0389519
- Removable pin for ease of assembly with security grub-screw

Technical Information

Assessment Data

Performance: Endurance tested to 100,000 operations

Corrosion resistance: Meets requirements of BS EN 1670 - grade 5 (500 hrs Salt Spray)

Material Specification

Hinge Body: Zinc Alloy BS1004A

Hinge Leaf: Zinc Alloy BS1004A

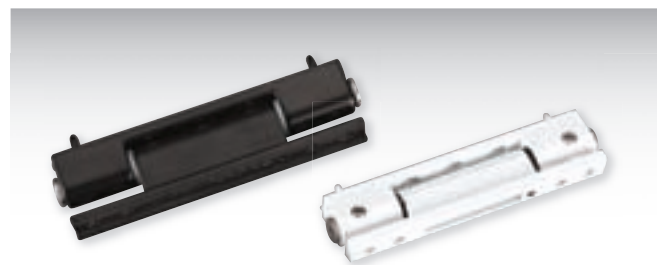
Hinge Pin: 304 Stainless Steel

Powder Coating: White, Brown & Caramel, 60 microns minimum coating thickness

Additional Information

Accessories: Standard Flat Hinge Jig (HIN115J), Allen Keys, Screws

Box Quantity: 20



PRODUCT CODES			
TYPE	BROWN	WHITE	CARAMEL
FLAT	HINA115BRF	H115WHF	-
SYNSEAL TYPE	H115BBS	H115WHS	H115CS
DURAFLEX TYPE	DBHBR	DBHWH	-
ANGLED	HINA115BRA	H115WHA	-



Call our Sales Team now on 01484 725 001

avocet
HARDWARE