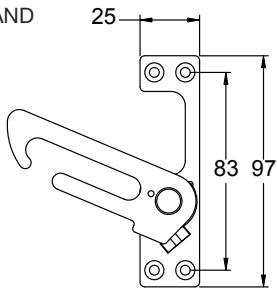


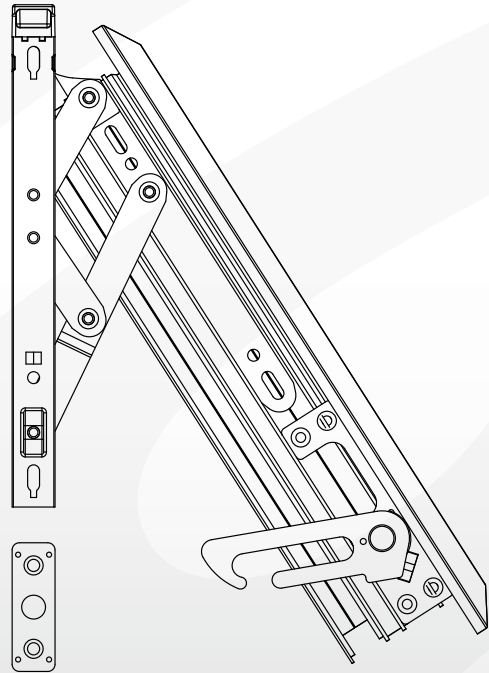
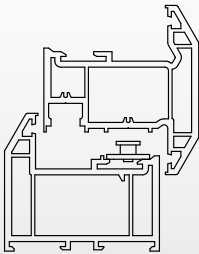
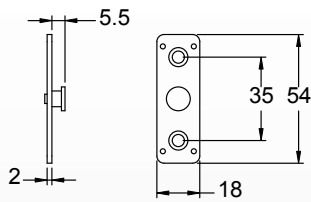
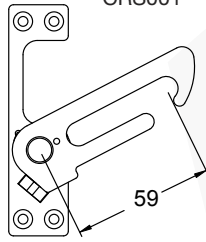
Technical Information

CHILD RESTRICTOR STAY

LEFT HAND
CRS002

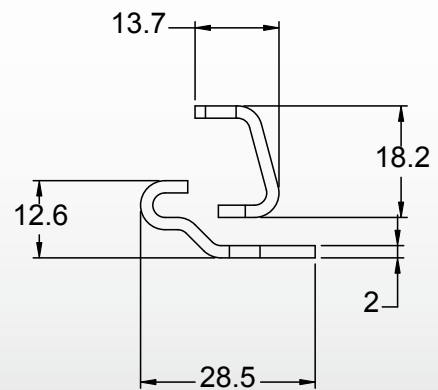
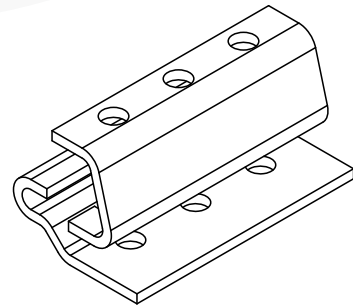
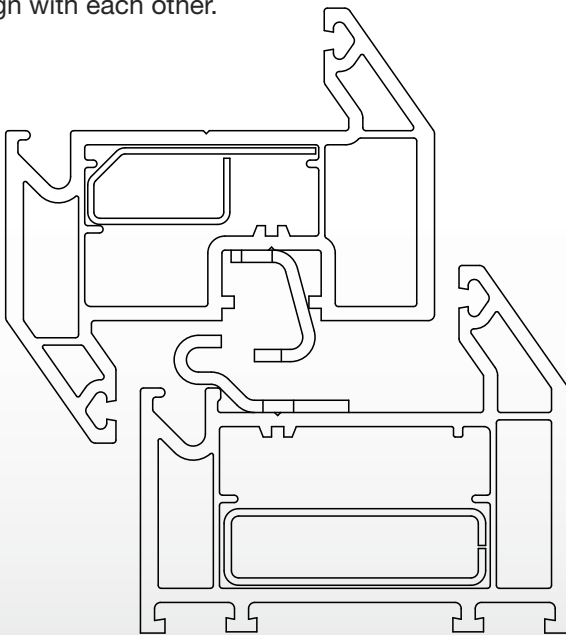


RIGHT HAND
CRS001



ANTI JEMMY DEVICE

Note: Position close to friction stay corner. Frame & Sash parts are to align with each other.



Child Restrictor Stay

- Used in conjunction with friction stays and butt hinges
- Designed for top or side hung windows
- Conforms to BS6375 part 2 & BS 8213
- Designed to limit opening of window to 100mm
- Can be released to facilitate full opening of the window
- Automatically re-engages restricted position on closing of window
- Available in left and right hand variants to suit requirements
- Manufactured from Steel C1008, Silver Trivalent finish to meet BS 1670:1998 Grade 3

PRODUCT CODE	
CODE	DESCRIPTION
CRS001	CHILD RESTRICTOR STAY - RIGHT HAND
CRS002	CHILD RESTRICTOR STAY - LEFT HAND

Please Note: The Child Restrictor Stay is intended to prevent children from easily opening a window and is not an anti-theft device.

May require packers to suit different profiles. Contact Avocet technical department for more information.

Additional Information

Box Quantity: Inner 10, Outer 200

Window Anti-Jemmy Device

- Will fit most profiles
- Easy to fit on both side and top hung windows
- Added security with friction stays to help in conforming to BS 7950
- Manufactured from Steel C1008, Silver Trivalent finish to meet BS 1670:1998 Grade 3
- Supplied as a pair - one to fit on sash and one for the frame

PRODUCT CODE	
CODE	DESCRIPTION
AJ002	AVOCET WINDOW ANTI JEMMY DEVICE

Additional Information

Sold single in bag format or in bulk box format

Box Quantity: 450

